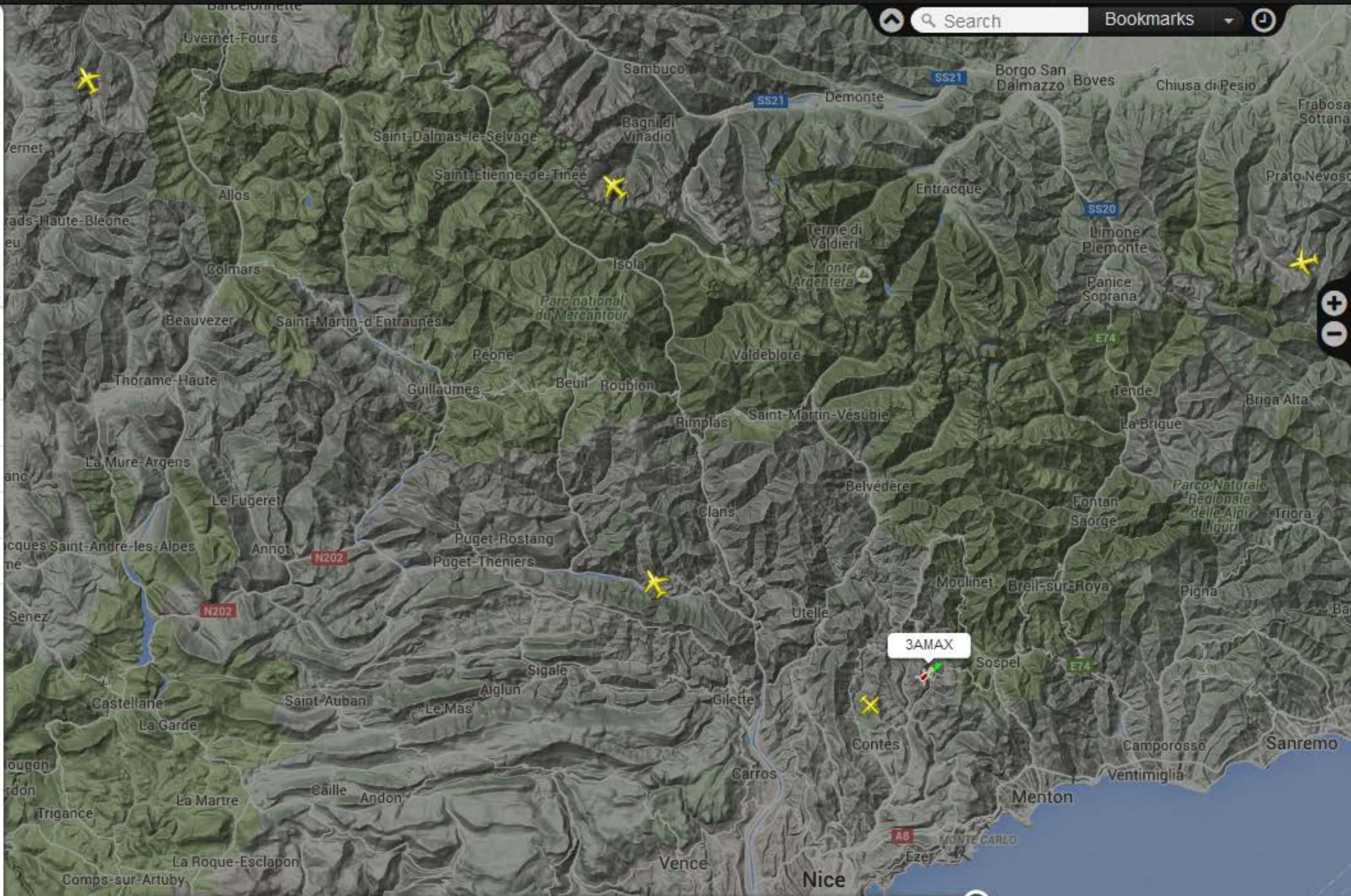




Aircraft (AS50) Aerospatiale AS350B Ecureuil	
Registration (4D4020) 3A-MAX	
Altitude 1,059 m	Vertical Speed -512 fpm
Speed 174 km/h	Track 226°
Latitude 43.8661	Longitude 7.3716
Radar F-LFKB2	Squawk N/A



Speed: 12x

2016-01-24 11:53

9:00 10:00 11:00 12:00 13:00

Sun 24 Jan 2016

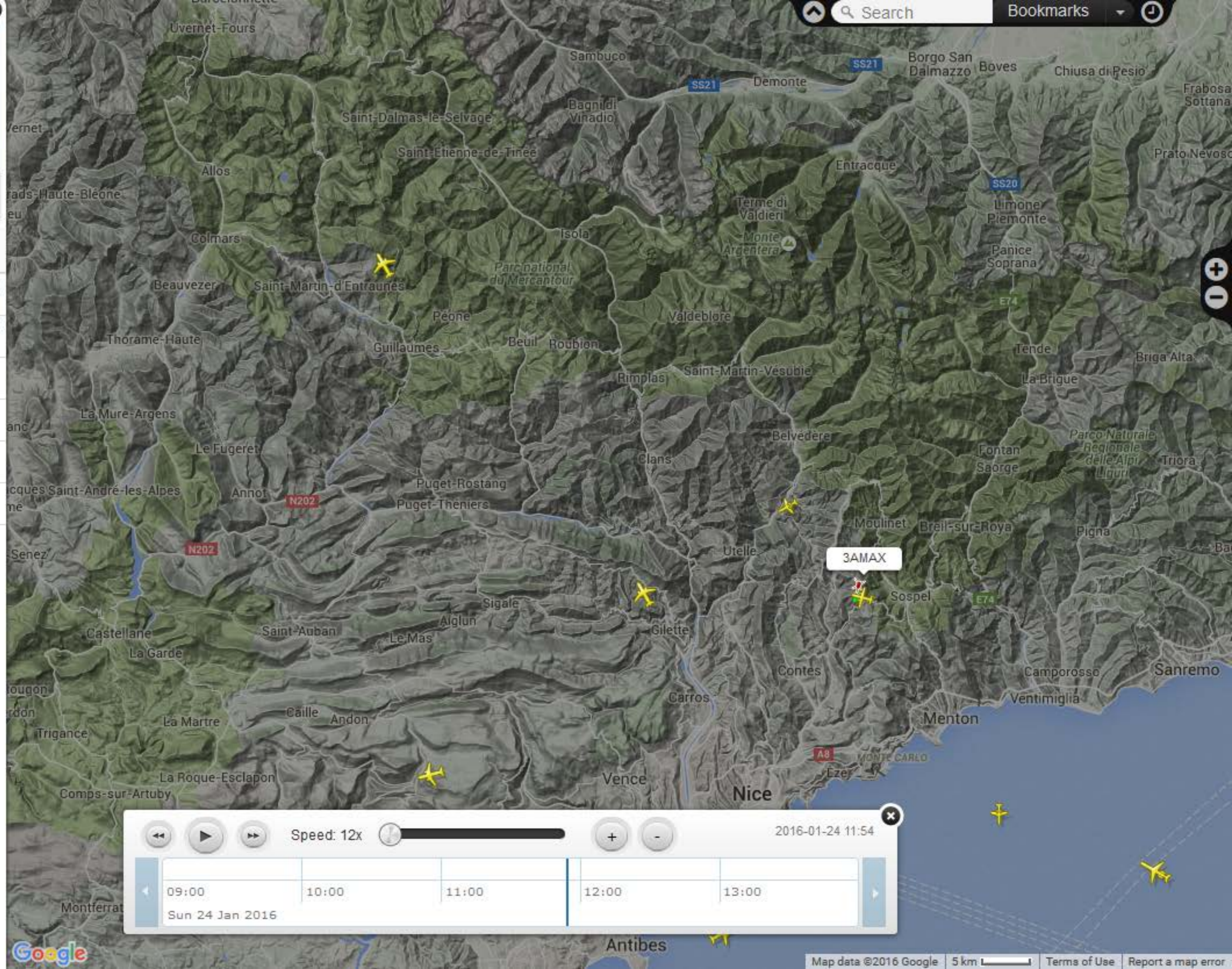


© LUNSEZ AIRCRAFT

3AMAX
Heli Air Monaco



Aircraft (AS50)	
Aerospatale AS350B Ecureuil	
Registration (4D4020)	
3A-MAX	
Altitude	Vertical Speed
1,074 m	+640 fpm
Speed	Track
146 km/h	16°
Latitude	Longitude
43.8836	7.3884
Radar	Squawk
F-LFKB2	N/A



Speed: 12x ⏪ ▶ ⏩ + - 2016-01-24 11:54

09:00	10:00	11:00	12:00	13:00
Sun 24 Jan 2016				



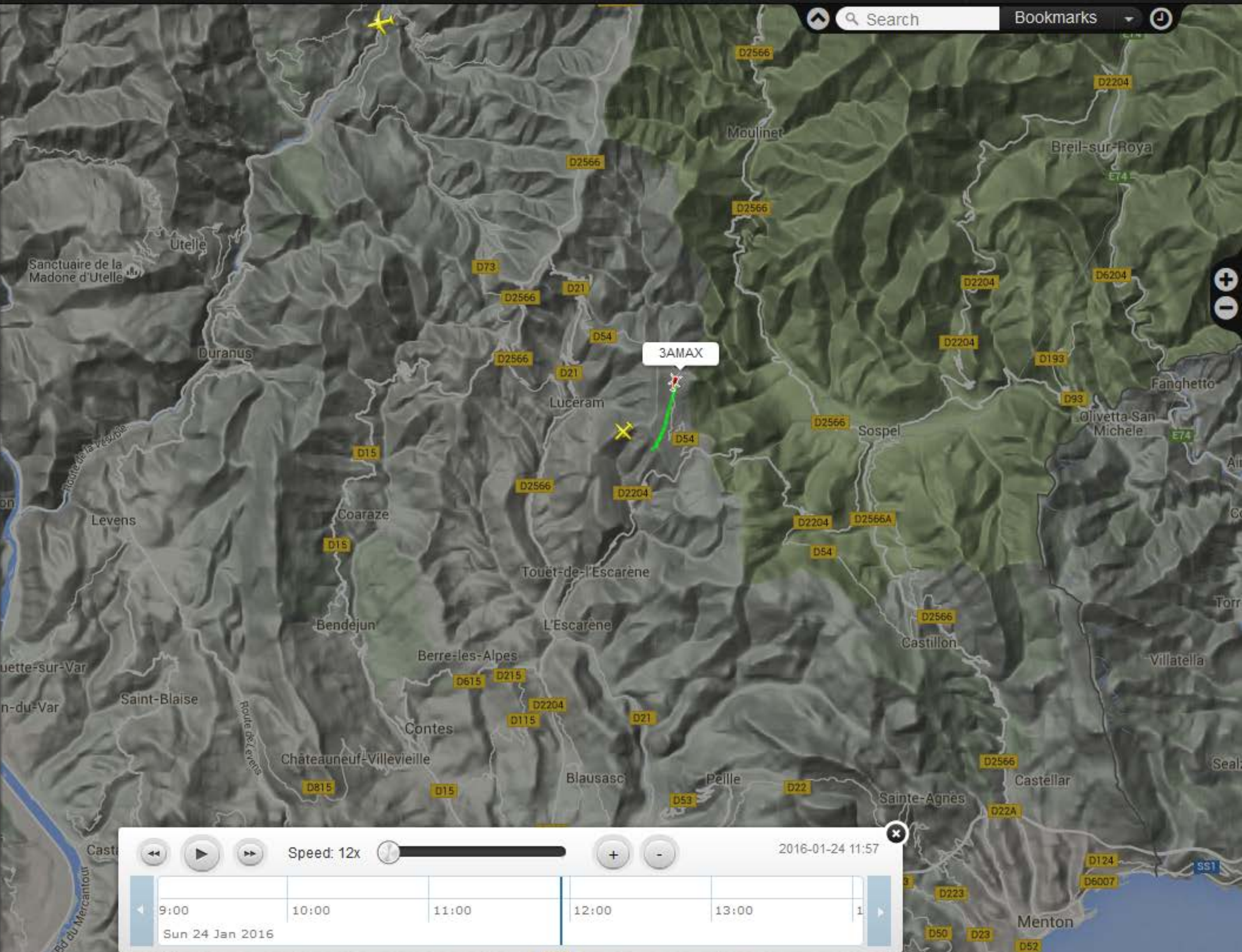


3AMAX
Heli Air Monaco

Aircraft (AS50)
Aerospatiale AS350B Ecureuil

Registration (4D4020)
3A-MAX

Altitude 1,074 m	Vertical Speed +640 fpm
Speed 146 km/h	Track 16°
Latitude 43.8911	Longitude 7.3913
Radar F-LFKB2	Squawk N/A



Speed: 12x

2016-01-24 11:57

9:00 10:00 11:00 12:00 13:00

Sun 24 Jan 2016

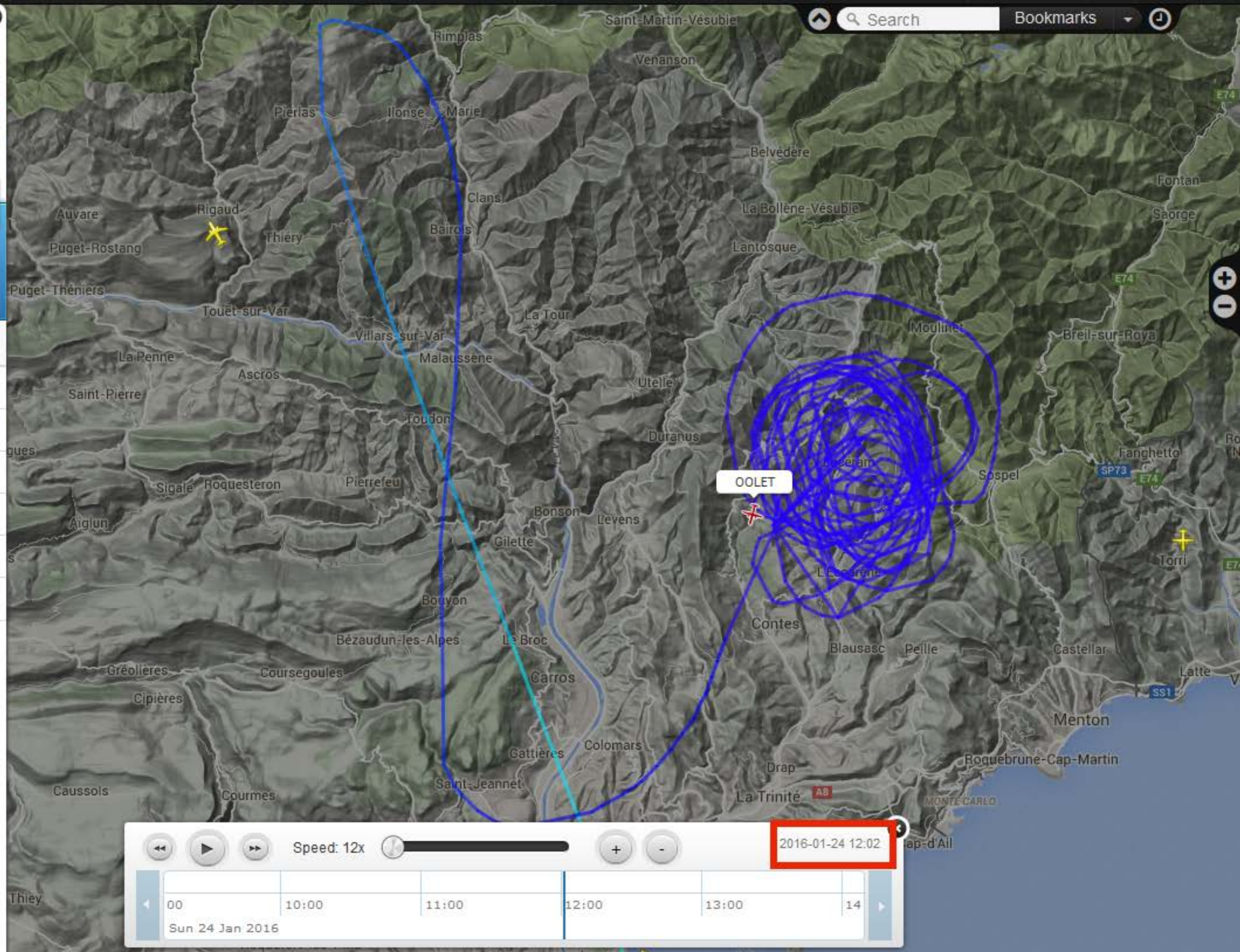


OOLET
Air Service Liege

NCE → ?
Nice
ATD 11:26 CET

3D

Aircraft	(BE20)
Beech B200 Super King Air	
Registration	(44B0B4)
OO-LET	
Altitude	Vertical Speed
8,534 m	0 fpm
Speed	Track
487 km/h	196°
Latitude	Longitude
43.8613	7.3054
Radar	Squawk
T-MLAT	4707



Speed: 12x

2016-01-24 12:02

00 10:00 11:00 12:00 13:00 14

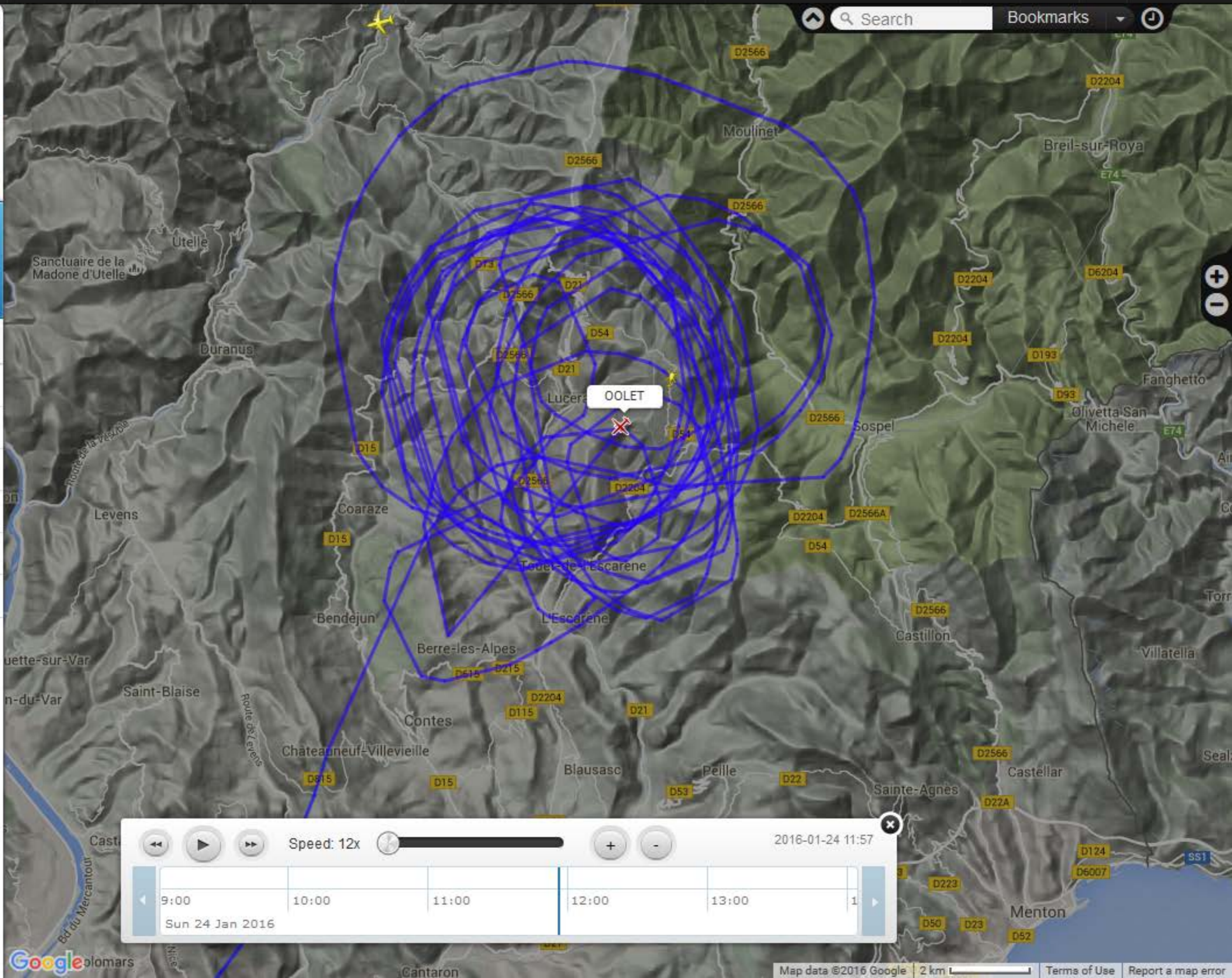
Sun 24 Jan 2016



OOLET
Air Service Liege

NCE → ?
Nice
ATD 11:26 CET

Aircraft (BE20) Beech B200 Super King Air	
Registration (44B0B4) OO-LET	
Altitude 8,534 m	Vertical Speed 0 fpm
Speed 398 km/h	Track 228°
Latitude 43.8809	Longitude 7.3511
Radar T-MLAT	Squawk 4707



Speed: 12x

2016-01-24 11:57

9:00 10:00 11:00 12:00 13:00

Sun 24 Jan 2016